

# DECENTRALISED ADMINISTRATION OF PELOPONNESE, WESTERN GREECE & IONIAN

## A Short Profile

Patras, 30/10/2017



# OVERVIEW

- Role
- Facts & Figures
- Forest Coordination & Supervision Directorate
- Civil Protection Directorate
- ICT Directorate
- Previous experience
- National Park of Kotychi – Strofylia Wetlands  
(local pre-defined area)





ΑΠΟΚΕΝΤΡΩΜΕΝΗ ΔΙΟΙΚΗΣΗ  
ΠΕΛΟΠΟΝΝΗΣΟΥ,  
ΔΥΤΙΚΗΣ ΕΛΛΑΔΑΣ & ΙΟΝΙΟΥ

ενεργητική &  
αποτελεσματική!

# ROLE (1/2)

Project co-funded by the European Union and National Funds of the participating countries

"... The decentralised administrations are independent units whose mission is the executive and supervisory activities of the State in their area of responsibility, in accordance with Article 101 of the Constitution ..."

L. 3852/2010 "Kalikratis"





## ROLE (2/2)

In particular, the Decentralised Administration manages:

- state cases that cannot be handled for constitutional reasons by the local government (e.g., legality of acts of local government, forest protection, management of public property and state wealth, etc.)
- state cases that are gradually decentralised from central government to create an executive and flexible state
- state cases aimed at immediate and quality services to the citizen



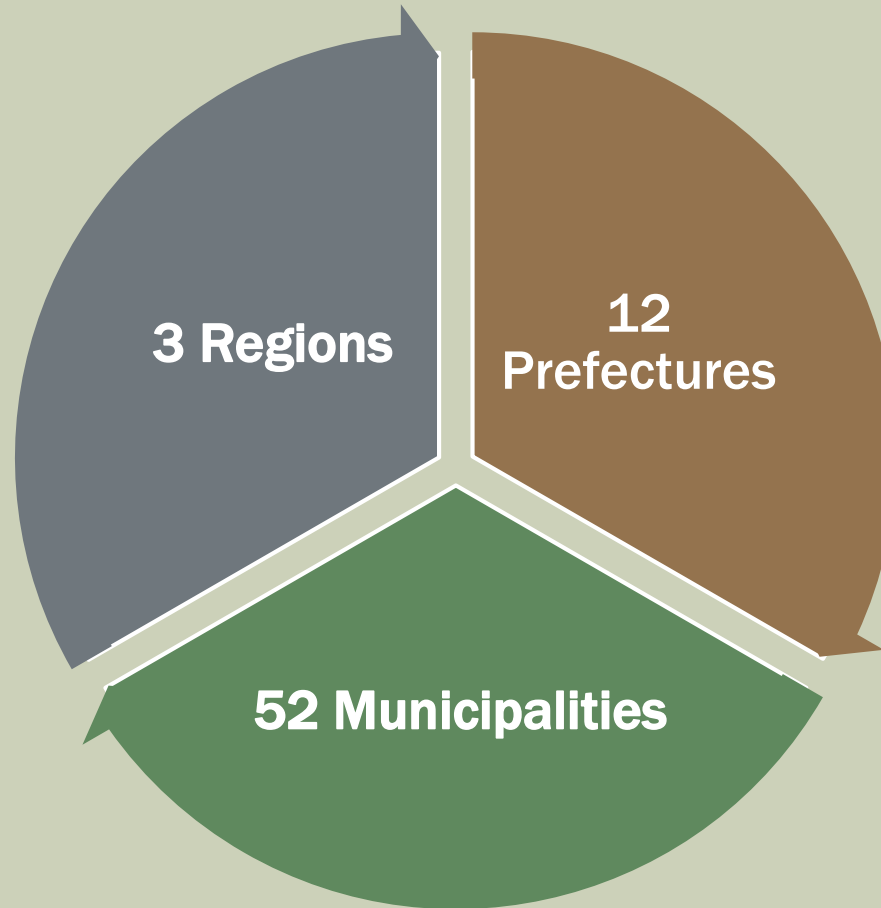
ΑΠΟΚΕΝΤΡΩΜΕΝΗ ΔΙΟΙΚΗΣΗ  
ΠΕΛΟΠΟΝΝΗΣΟΥ,  
ΔΥΤΙΚΗΣ ΕΛΛΑΔΑΣ & ΙΟΝΙΟΥ

*ενέλικτη &  
αποτελεσματική*

# FACTS & FIGURES (1/2)



Project co-funded by the European Union and  
National Funds of the participating countries



**Geographical Area:**  
29.133 sq km

**Population:**  
1.500.000



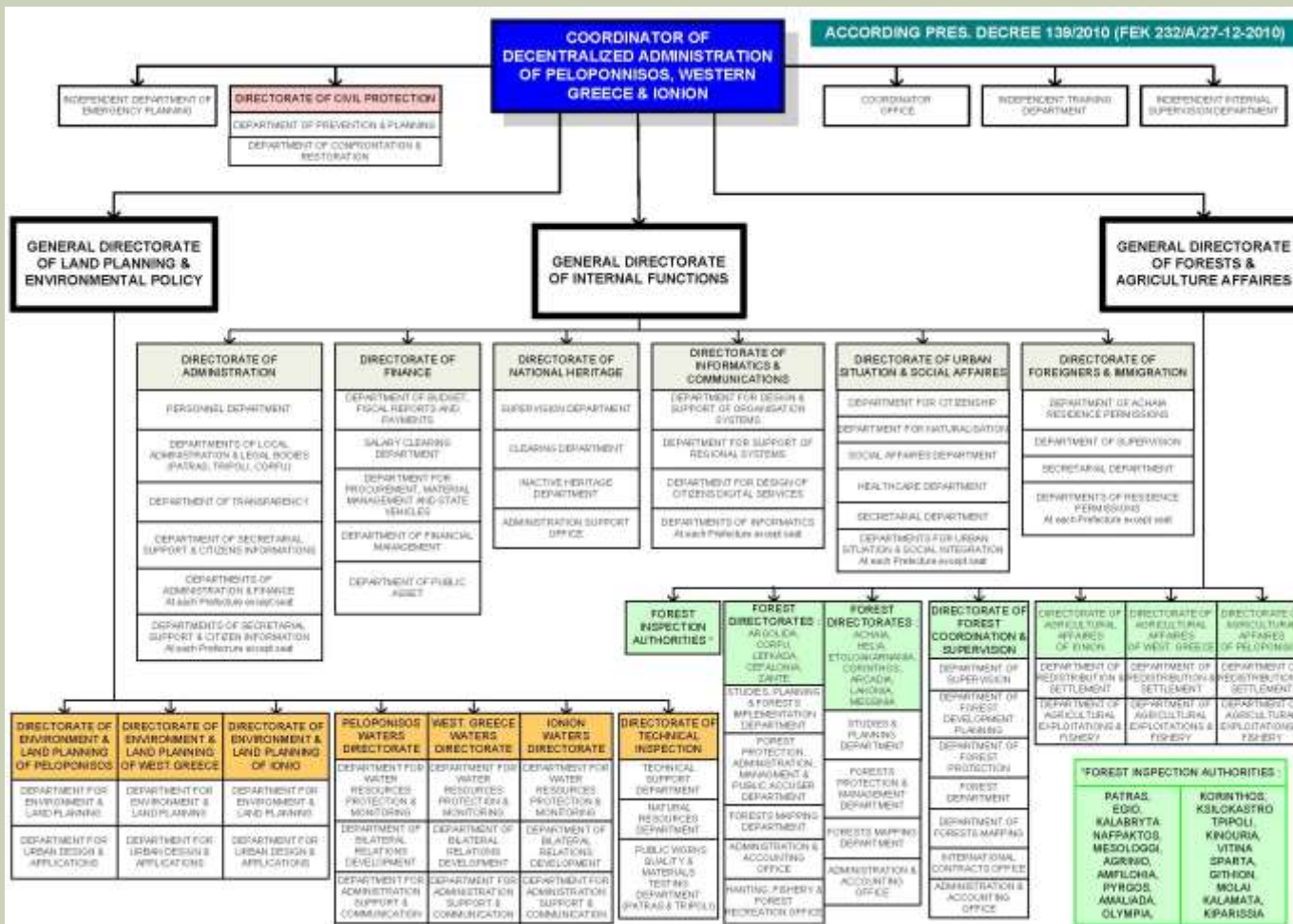


**ΑΠΟΚΕΝΤΡΩΜΕΝΗ ΔΙΟΙΚΗΣΗ  
ΠΕΛΟΠΟΝΝΗΣΟΥ,  
ΔΥΤΙΚΗΣ ΕΛΛΑΔΑΣ & ΙΟΝΙΟΥ**

*ενεργητή &  
αποτελεσματική*

# FACTS & FIGURES (2/2)

Project co-funded by the European Union and National Funds of the participating countries



**3 General Directorates**

**Over 40 Directorates**

**Over 200 Departments**

**Over 50 Offices**

**Over 1400 Employees**

- Supervision and control of all Forest Services
- Control of projects and ascertainment of the implementation of forest law in general
- Preparation of annual and multiannual programs of general interest, as well as study of forest development issues
- Elaboration of fire protection programs for forests
- Design and study of methods and tools for the prevention and suppression of forest illegalities

- Study of the problems and coordination of the task of exploiting public forests
- Coordination of the disposal and marketing of forest products
- Issues relating to, under the provisions in force, changes in the use of forests and wooded lands
- Carrying out of works of training, maintenance and updating of forest maps, as well as classification and spatial planning of terrestrial natural ecosystems of the Decentralized Administration



- Production and delivery of circulars to all municipalities of APD DEPIN on issues related to wildfires, heat waves, wastes, earthquakes, floods
- Editing of Memorandum of Actions of APD DEPIN (fires, earthquakes, etc.)
- Joining Coordinating Bodies of Regions & Municipalities
- Organization of Coordination Meetings for fires
- Design of a Management Plan for Casualties (M.P.C.)
- Elaboration of a Response Plan for Technological Accidents of Long Range (R.P.T.A.L.R.)



ΑΠΟΚΕΝΤΡΩΜΕΝΗ ΔΙΟΙΚΗΣΗ  
ΠΕΛΟΠΟΝΝΗΣΟΥ,  
ΔΥΤΙΚΗΣ ΕΛΛΑΔΑΣ & ΙΟΝΙΟΥ

*επείγουσα &  
αποτελεσματική*

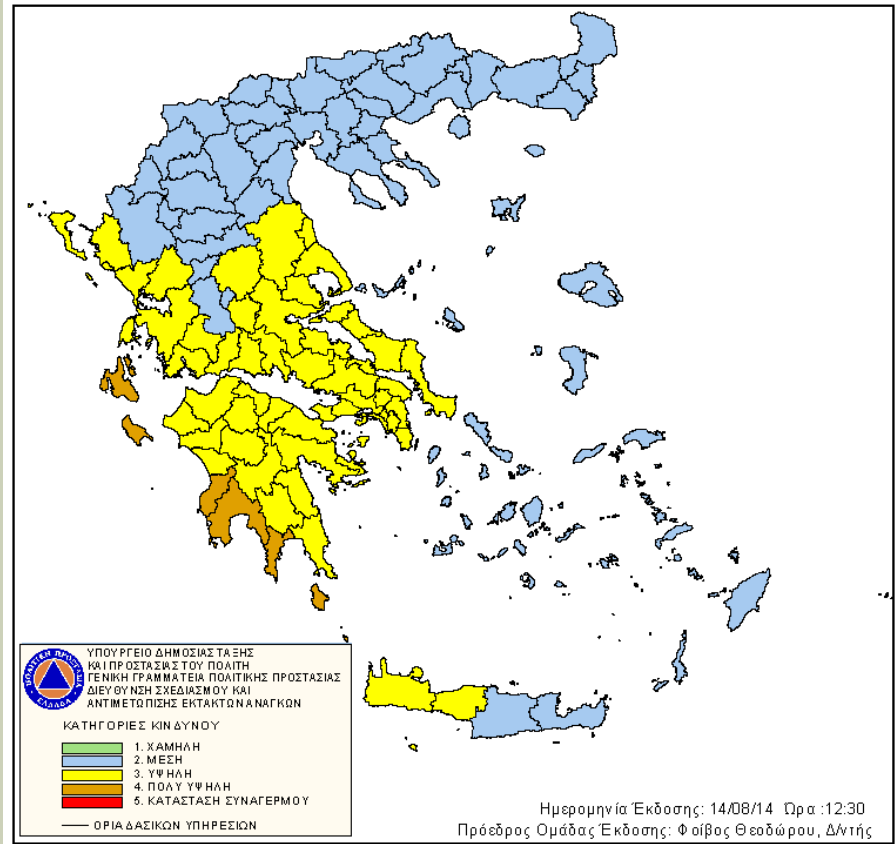
# CIVIL PROTECTION DIRECTORATE (2/2)



Project co-funded by the European Union and  
National Funds of the participating countries

Daily Forecast Fire  
Danger Map

ΧΑΡΤΗΣ ΠΡΟΒΛΕΨΗΣ ΚΙΝΔΥΝΟΥ ΠΥΡΚΑΓΙΑΣ ΠΟΥ ΙΣΧΥΕΙ ΓΙΑ  
Παρασκευή 15/08/14





# ICT DIRECTORATE (1/2)

- New or upgraded applications in operation (e.g., IDE document processing for 12 Prefectures, management of co-funded ICT projects, digital signature, etc.)

• **F&P ΟΠΣΠ** : File & Print **Server** του 2005 στο πλαίσιο του έργου «Ολοκληρωμένο Πληροφοριακό Σύστημα Περιφερειών» (ΟΠΣΠ)  
• **COMPASS** : **Server** παλαιάς εφαρμογής Μισθοδοσίας  
• **OTS** : **Server** εφαρμογής Μισθοδοσίας – Διαχείρισης Προσωπικού της OTS

• **on-line ΔΑΥΚ** : Δελτίο Ατομικής & Υπηρεσιακής Κατάστασης (ΔΑΥΚ) - ΣΥΣΤΗΜΑ ΣΤΟΙΧΕΙΩΝ ΓΙΑ ΣΥΝΤΑΞΗ ΥΠΑΛΛΗΛΩΝ  
• **on-line ΔΑΕΜ** : ΣΥΣΤΗΜΑ ΠΑΡΑΚΟΛΟΥΘΗΣΗΣ ΑΛΛΟΔΑΠΩΝ, ΣΥΣΤΗΜΑ ΠΑΡΑΚΟΛΟΥΘΗΣΗΣ ΙΘΑΓΕΝΕΙΑΣ  
• **on-line ΕΑΠ** : Εφαρμογή Ενιαίας Αρχής Πληρωμής (ΕΑΠ) για την Μισθοδοσία & Χρηματικά εντάλματα  
• **on-line OTS (Προσωπικό)** : Σύνδεση με την κεντρική Βάση δεδομένων ΜΙΣΘΟΔΟΣΙΑΣ - ΠΡΟΣΩΠΙΚΟΥ  
• **on-line e-PROCUREMENT** : Ηλεκτρονικό Μητρώο Δημοσίων Συμβάσεων – Ανάρτηση αιτημάτων, προκηρύξεων, Συμβάσεων, εντολών πληρωμής από τις Υπηρεσίες για δαπάνες άνω των 1000 €  
• **on-line ΑΠΟΓΡΑΦΗ** : ΜΗΤΡΩΟ ΜΙΣΘΟΔΟΤΟΥΜΕΝΩΝ ΕΛΛΗΝΙΚΟΥ ΔΗΜΟΣΙΟΥ-ΗΛΕΚΤΡΟΝΙΚΗ ΥΠΗΡΕΣΙΑ ΑΠΟΓΡΑΦΗΣ  
• **ΗΛ. ΠΡΩΤΟΚΟΛΟ PARYRUS** : Ηλεκτρονικό πρωτόκολλο Paryrus της Modus υπερβολάβου της ALTEC από το έργο ΟΠΣΠ  
• **on-line ΚΑΤΑΧΩΡΗΣΗ ΔΑΠΑΝΩΝ ΣΤΟ ΓΛΚ** : Μηνιαίες καταχωρήσεις δαπανών ανα ΚΑΕ στην βάση του Γεν. Λογιστ. Κράτους  
• **on-line «ΧΑΔΑ»** Εξέλιξη αποκαταστάσεων χώρων ανεξέλεγκτης διάθεσης απορριμμάτων (ΧΑΔΑ)  
• **ΔΙΑΧΕΙΡΙΣΗ ΛΑΤΟΜΕΙΑ, ΑΠΕ, ΑΥΘΑΙΡΕΤΑ** : Τοπική βάση δεδομένων στοιχείων Λατομείων, ΑΠΕ και Αυθαιρέτων κτισμάτων και αποτύπωση αυτών σε ψηφιακά υπόβαθρα Γεωγραφικών πληροφοριακών συστημάτων από την Δ/νση Τεχνικού Ελέγχου.  
• **ΠΡΟΣΤΑΣΙΑ-ΟΛΟΚΛΗΡΩΜΕΝΟ ΣΥΣΤΗΜΑ ΔΙΑΧΕΙΡΙΣΗΣ ΓΕΩΓΡΑΦΙΚΩΝ ΔΕΔΟΜΕΝΩΝ ΤΗΣ ΔΑΣΙΚΗΣ ΥΠΗΡΕΣΙΑΣ** : Διαδυσκτική εφαρμογή χαρακτηρισμού εκτάσεων και αποτύπωσης αυτών σε υπόβαθρα GIS, εγκατεστημένη σε τοπικό Server (Στις Δ/νσεις Δασών Κέρκυρας & Κεφαλλονιάς)



ΑΠΟΚΕΝΤΡΩΜΕΝΗ ΔΙΟΙΚΗΣΗ  
ΠΕΛΟΠΟΝΝΗΣΟΥ,  
ΔΥΤΙΚΗΣ ΕΛΛΑΔΑΣ & ΙΟΝΙΟΥ

ενέλικτη &  
αποτελεσματική

# ICT DIRECTORATE (2/2)



Project co-funded by the European Union and National Funds of the participating countries

- Management & support in numerous e-government applications (e.g., e-procurement, Δι@ύγεια, on-line ΕΑΠ, on-line ΔΑΥΚ, on-line ΔΑΕΜ, etc.)

ΚΑΡΤΕΛΑ ΠΡΩΤΟΚΟΛΛΗΣΗΣ ΓΙΑ ΚΑΤΑΧΩΡΗΣΗ

Το Εθνικό Σύστημα Ηλεκτρονικών Δημοσίων Συμβάσεων (ΕΣΗΔΗΣ) ΣΤΗΝ ΙΣΤΟΣΕΛΙΔΑ : [www.eprocurement.gov.gr](http://www.eprocurement.gov.gr)

ΕΠΙΧΕΙΡΙΣΤΙΚΑ ΑΝΑΖΗΤΗΣΗ ΠΡΟΧΗΡΗΣΕΩΝ ΑΠΟ ΤΟ ΜΗΤΡΩΟ ΔΗΜΟΣΙΩΝ ΣΥΜΒΑΣΕΩΝ :

Εθνική Πύλη Δημόσιας Διοίκησης

Εθνική Πύλη εγείσε

Εθνική Πύλη Ανομή

ΑΠΟΛΕΥΣΤΕΣ ΑΡΧΕΣ

ΟΙΚΟΝΟΜΙΚΟΙ ΦΟΡΕΙΣ

[http://www.goidata.gov.gr/goidata/index.php?option=com\\_soh50&Itemid=6&layout=edit&Itemid=6](http://www.goidata.gov.gr/goidata/index.php?option=com_soh50&Itemid=6&layout=edit&Itemid=6)

# PREVIOUS EXPERIENCE (1/3)

## ■ PROGRAMME “GREECE – ITALY 2007-2013”

*Integrated accessibility and routing guidance platform for safe multimodal transport in sustainable smart ports and regions (GUIDEPORT)*

## ■ PROGRAMME “ADRIATIC IPA Cross Border Cooperation 2007-2013”

*Adriatic Holistic Forest Fire Protection (HOLISTIC)*





ΑΠΟΚΕΝΤΡΩΜΕΝΗ ΔΙΟΙΚΗΣΗ  
ΠΕΛΟΠΟΝΝΗΣΟΥ,  
ΔΥΤΙΚΗΣ ΕΛΛΑΔΑΣ & ΙΟΝΙΟΥ

ενέργεια &  
αποτελεσματικότητα!

# PREVIOUS EXPERIENCE (2/3)



Project co-funded by the European Union and National Funds of the participating countries

The HOLISTIC project is intended to reduce the number and the impact of forest fires, to protect people, natural environment and properties, and in particular to promote fire prevention among rural communities in fire prone areas of regions facing the Adriatic

Furthermore, the project provides preventive actions related to seismic risk aimed at establishing a permanent instrument for preventing, controlling and managing strategic public buildings.

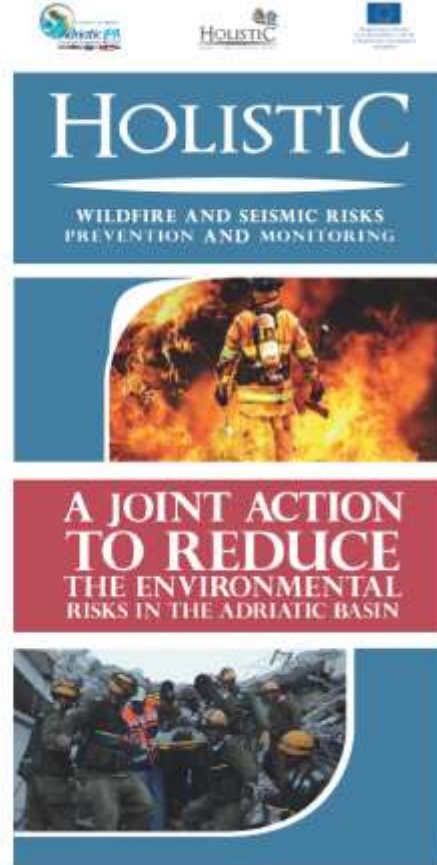
The project performs joint initiatives and pilot actions for direct and indirect long, medium and short-term preventive measures in wildfire and earthquake risks to enhance policies, regulations and coordination mechanisms.

The project addresses the above issues through specific interventions on both environmental resources and on human ones



[www.adriaholistic.eu](http://www.adriaholistic.eu)

The document has been prepared with the financial assistance of the 2014-2020 Adriatic Cross-Border Cooperation Programme. The recipient of this document are the sole responsible of its contents and are under no circumstances be regarded as reflecting the position of the 2014-2020 Adriatic Cross-Border Cooperation Programme Authority.







# PREVIOUS EXPERIENCE (3/3)

Project co-funded by the European Union and National Funds of the participating countries

## PILOT APPLICATIONS

Database Server  
DELL Server PowerEdge R630



Workstation  
DELL OptiPlex 3020 MT



In the framework of the HOLISTIC project experimental models and pilot systems were developed and deployed in CORFU island, including:

- i. Monitoring, surveillance and early warning system for forest fires
- ii. recording of fuel life cycle
- iii. campaign as indirect prevention measure
- iv. forecasting models and algorithms for forest fire risk calculation, and real time control system

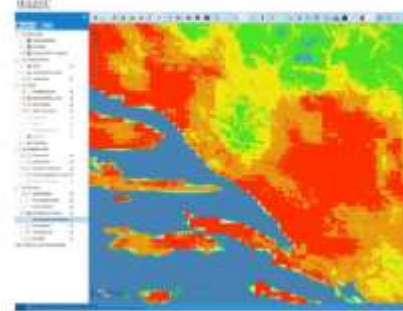


Visible Spectrum Camera

Current fire risk  
Fire Risk Warning Panel



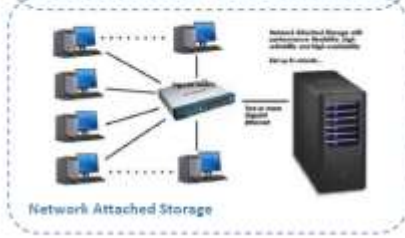
### AdriaFireGIS System



The integrated system includes a GPS position tracking system that uses trackers and navigators for the fire service vehicles. System users are able to monitor the position of firefighters and their vehicles during fire incidents and plan their actions.



GPS Navigator  
GARMIN Navi 2689 (LMT)





ΑΠΟΚΕΝΤΡΩΜΕΝΗ ΔΙΟΙΚΗΣΗ  
ΠΕΛΟΠΟΝΝΗΣΟΥ,  
ΔΥΤΙΚΗΣ ΕΛΛΑΔΑΣ & ΙΟΝΙΟΥ

ενέργεια &  
αποτελεσματικότητα

# NATIONAL PARK OF ΚΟΤΥΧΙ - STROFYLIA WETLANDS (1/3)



Project co-funded by the European Union and  
National Funds of the participating countries

*...land of unparalleled beauty...*



- Black mountains
- Wet meadows
- Lagoons
- Sand dunes
- Forest



ΑΠΟΚΕΝΤΡΩΜΕΝΗ ΔΙΟΙΚΗΣΗ  
ΠΕΛΟΠΟΝΝΗΣΟΥ,  
ΔΥΤΙΚΗΣ ΕΛΛΑΔΑΣ & ΙΟΝΙΟΥ

εξέλιξη &  
αποτελεσματικότητα

# NATIONAL PARK OF ΚΟΤΥΧΙ - STROFYLIA WETLANDS (2/3)



Project co-funded by the European Union and  
National Funds of the participating countries

*...the forest of Strofylia...*



# NATIONAL PARK OF KOTYCHI – STROFYLIA WETLANDS (3/3)

APD DEPIN main services in Kotychi – Strofilia area comprise the following ones:

- 2 Forest Directorates (Achaia & Ilia)
- Directorate of Agricultural Affairs of Western Greece
- Western Greece Waters Directorate
- Directorate of Environment & Land Planning of Western Greece





ΑΠΟΚΕΝΤΡΩΜΕΝΗ ΔΙΟΙΚΗΣΗ  
ΠΕΛΟΠΟΝΝΗΣΟΥ,  
ΔΥΤΙΚΗΣ ΕΛΛΑΔΑΣ & ΙΟΝΙΟΥ  
*ενέλικτη &  
αποτελεσματική!*

# THANK YOU!!!

Project co-funded by the European Union and National Funds of the participating countries

